

**HI-FLOW 2-WAY VALVE**  
 Push-to-Close, Linear Plug  
 2000VA-2005VA Model A  
 36RC, 36RE, 36RX Model B

**PARTS LIST**

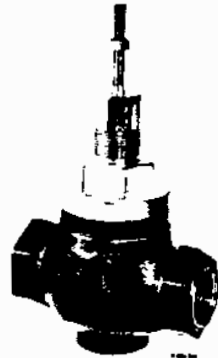
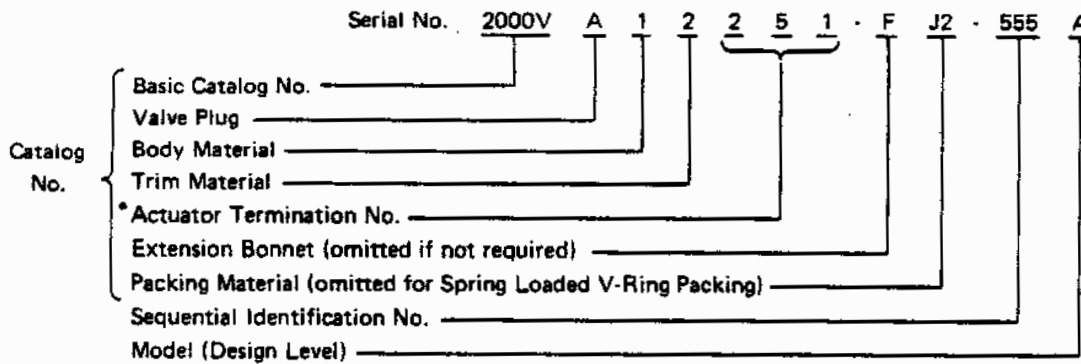


Figure 1—Hi-Flow Valve Body Assembly

**CONTROL VALVE SERIAL AND CATALOG NUMBERS**



\*These digits are described in the section for the Valve Actuators.

<b>BASIC CATALOG NO.</b>	<b>VALVE PLUG</b>
2000V — Hi-Flow Valve, 1/2 inch Push-to-Close	A — Linear Plug
2001V — Hi-Flow Valve, 3/4 inch Push-to-Close	<b>BODY MATERIAL</b>
2002V — Hi-Flow Valve, 1 inch Push-to-Close	1 — Ductile Iron
2003V — Hi-Flow Valve, 1-1/4 inch Push-to-Close	3 — Bronze
2004V — Hi-Flow Valve, 1-1/2 inch Push-to-Close	4 — Type 316 SST
2005V — Hi-Flow Valve, 2 inch Push-to-Close	<b>TRIM MATERIAL</b>
	2 — Type 316 SST
	<b>EXTENSION BONNET</b>
	F — Extension Bonnet

• Recommended Spare Parts are identified by a plus sign (+) before the Item Number.  
 • ALWAYS SPECIFY SERIAL NUMBER STAMPED ON ACTUATOR DATA PLATE WHEN ORDERING PARTS.



**W.E. ANDERSON DIVISION**

**DWYER INSTRUMENTS, INC.**

P.O. Box 373, Michigan City, Indiana 46360  
 Phone: 219/879-8000 Fax: 219/872-9057 Telex: 25916

**PARTS LIST**

**PACKING MATERIAL**

- J2 – Spring Loaded Graphite Packing
- J3 – Lubricated Graphite Packing with Lubricator
- J7 – TFE V-Ring Packing for Vacuum Service

- J8 – Double TFE V-Ring Packing for Positive Pressure
- J9 – Double TFE V-Ring Packing for Negative Pressure
- J10 – Double TFE V-Ring Packing for Alternate Positive and Negative Pressures

**Table 1—Valve Body Assembly Part Numbers**

Size (Inches)	Ductile Iron (D1)		Bronze (BRZ)		316 SST (SST)				
	Catalog Number	Part Number	Catalog Number	Part Number	Catalog Number	Part Number			
1/2	2000VA12	36RE1*	140S1756*	2000VA32	36RC1*	140S1762*	2000VA42	36RX1*	140S1768*
3/4	2001VA12	36RE2*	140S1757*	2001VA32	36RC2*	140S1763*	2001VA42	36RX2*	140S1769*
1	2002VA12	36RE3*	140S1758*	2002VA32	36RC3*	140S1764*	2002VA42	36RX3*	140S1770*
1-1/4	2003VA12	36RE4*	140S1759*	2003VA32	36RC4*	140S1765*	2003VA42	36RX4*	140S1771*
1-1/2	2004VA12	36RE5*	140S1760*	2004VA32	36RC5*	140S1766*	2004VA42	36RX5*	140S1772*
2	2005VA12	36RE6*	140S1761*	2005VA32	36RC6*	140S1767*	2005VA42	36RX6*	140S1773*

\*Add suffix specified in Figure 2

E-505-301

**Table 2—Bonnet, Extension Bonnet, Valve Plug, Body and Seat Ring Part Numbers**

Size (Inches)	Part Number									
	Reference Number									
	7-BRZ	7-SST	46-BRZ	46-SST	31A	31B	34-DI	34-BRZ	34-SST	35
1/2	31P185*	31P190*	10P1273-1	10P1273-2	19S366	19S406	41P457	41P463	41P469	78P607
3/4	31P185*	31P190*	10P1273-1	10P1273-2	19S367	19S407	41P458	41P464	41P470	78P608
1	31P186*	31P191*	10P1274-1	10P1274-2	19S368	19S408	41P459	41P465	41P471	78P609
1-1/4	31P187*	31P192*	10P1275-1	10P1275-2	19S369	19S409	41P460	41P466	41P472	78P610
1-1/2	31P188*	31P193*	10P1276-1	10P1276-2	19S370	19S410	41P461	41P467	41P473	78P611
2	31P189*	31P194*	10P1277-1	10P1277-2	19S371	19S411	41P462	41P468	41P474	78P612

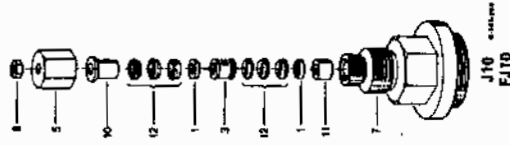
\*Add suffix L for Bonnet requiring Lubricator

E-505-302

Refer to Figure 2

ITEM	PART NO.	DESCRIPTION	NO. REQ
1	10P564	Male Adapter – 200_VA12, 32	1
		200_VA12, 32 - J2	
		200_VA12, 32 - J8, J9, J10	
	10P1202	Male Adapter – 200_VA42	1
	200_VA42 - J2		
	200_VA42 - J8, J9, J10	2	
3	10P234G	Lantern Ring – 200_VA - J3, J8, J9, J10	1
4	11P855	Packing Spring – 200_VA	1
		200_VA - J2, J7	

Double TFE V-Ring Packing  
for Alternate Positive &  
Negative Pressure



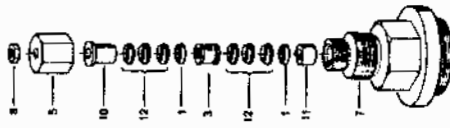
J10  
FJ10

Double TFE V-Ring Packing  
for Negative Pressure



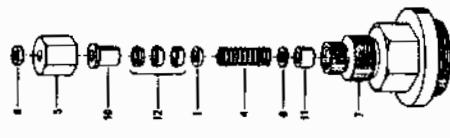
J9  
FJ9

Double TFE V-Ring Packing  
for Positive Pressure



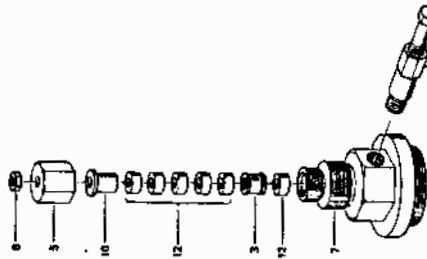
J8  
FJ8

TFE V-Ring Packing for  
Vacuum Service



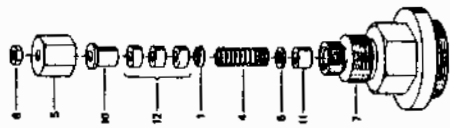
J7  
FJ7

Lubricated Graphite Packing  
with Lubricator



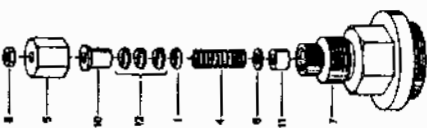
J3  
FJ3

Spring Loaded Graphite  
Packing



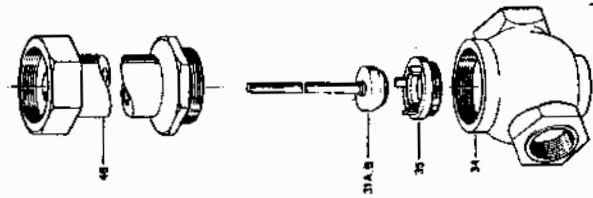
J2  
FJ2

Spring Loaded TFE  
V-Ring Packing



None  
F

Without Extension Bonnet  
With Extension Bonnet  
Suffix for Catalog Numbers  
and Part Numbers  
in Table 1



1-605-1117

Figure 2—Linear Plug Valve

## PARTS LIST

Refer to Figure 2

ITEM	PART NO.	DESCRIPTION	NO. REQ
5	{ 32P820 32P821 }	Packing Nut - 200_VA12, 32 } Packing Nut - 200_VA42 }	1
6	22P525	Washer - 200_VA_____ } 200_VA_____ - J2 } 200_VA_____ - J7 }	1 2
7	See Table 2	Bonnet	1
8	544M15	Stem Locknut, 5/16" Hex	1
9B	43S4	Lubricator - 200_VA_____ - J3	1
+ -	43S3	Lubricant, 8 oz Tube	1
10	{ 36P41 36P54 }	Packing Follower - 200_VA12, 32 } Packing Follower - 200_VA42 }	1
+11	43P493	Wiper Ring - 200_VA_____ } 200_VA_____ - J2 }	1
+12	{ 43P451 43P451 43P501 }	Packing, Graphite - 200_VA_____ - J2 Packing, Lubricated Graphite - 200_VA_____ - J3 Packing, TFE V-Ring - 200_VA_____ } 200_VA_____ - J7 } 200_VA_____ - J8, J9, J10 }	3 6 3 6
31A	See Table 2	Valve Plug - 200_VA_____ } Valve Plug - 200_VA_____ - F }	1
31B	See Table 2	Valve Plug - 200_VA_____ - F }	1
34	See Table 2	Valve Body	1
35	See Table 2	Seat Ring	1
46	See Table 2	Extension Bonnet - 200_VA_____ - F	1