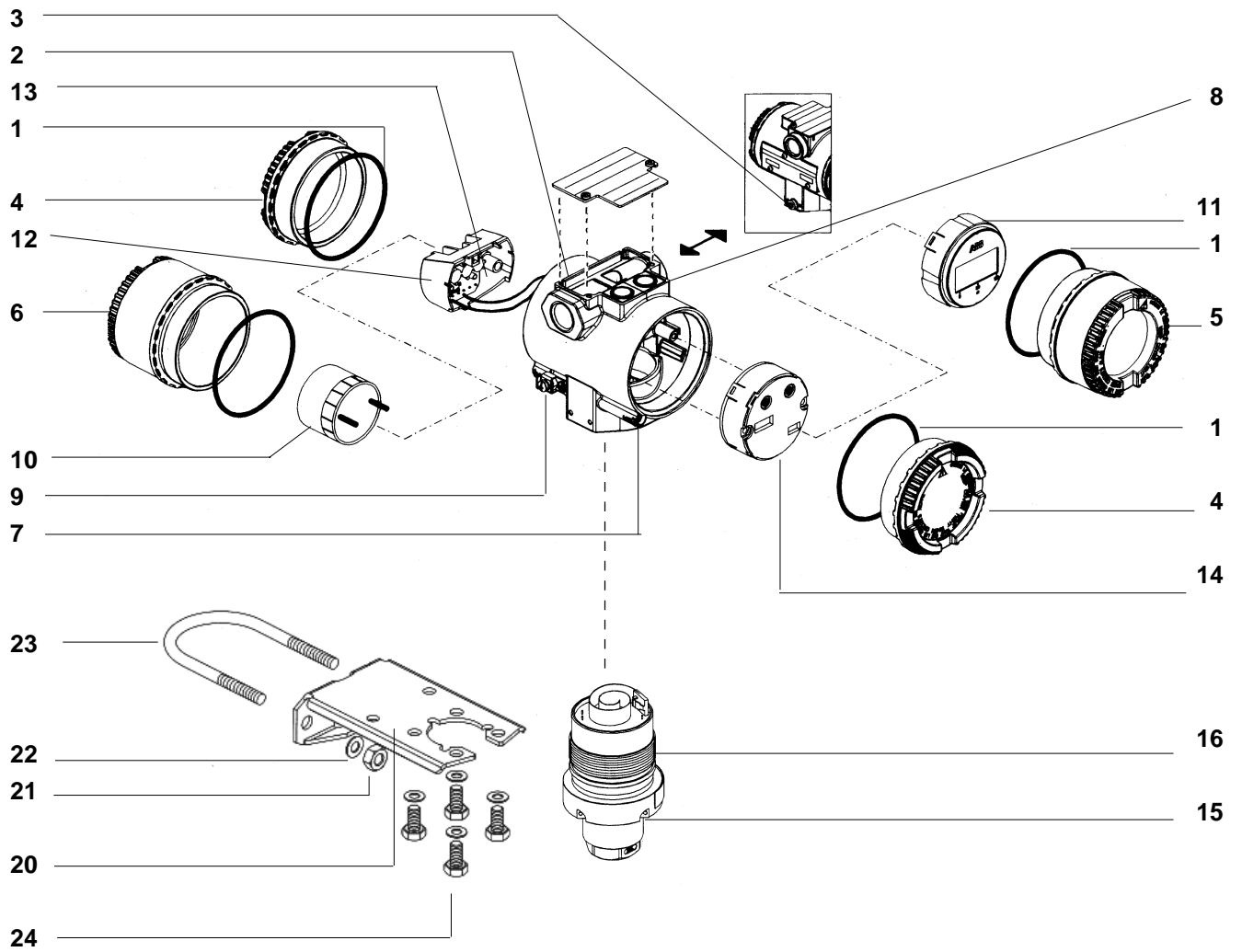


# Spares List

## 2600T Series Electronic Transmitters Models 26XHS/NS/GS/AS, 264HF/NF



Item no.	Description	Part No.	Q.ty per Tx
1	Package of 2 "O" rings for covers	DR0023	1
2	Barrel type electronics housing in aluminium, HART and 4 to 20 mA versions (includes items 3, 7, 8, 9 and 12)		1
	- 1/2" NPT	AR0306	
	- M20	AR0307	
	- Pg 13.5	AR0308	
	- 1/2" GK	AR0309	
	Barrel type electronics housing in AISI 316L ss, HART and 4 to 20 mA versions (includes items 3, 7, 8, 9 and 12)		1
	- 1/2" NPT	AR0310	
	- M20	AR0311	
	- Pg 13.5	AR0312	
	- 1/2" GK	AR0313	
	Barrel type electronics housing in aluminium copper-free, HART version (includes items 3, 7, 8, 9 and 12)		1
	- 1/2" NPT	AR2400	
	- M20	AR2401	
	- Pg 13.5	AR2402	
	- 1/2" GK	AR2403	
	Barrel type electronics housing in aluminium, Profibus and FF versions (includes items 3, 7, 8, 9 and 12)		1
	- 1/2" NPT	AR2406	
	- M20	AR2407	
	- Pg 13.5	AR2408	
	- 1/2" GK	AR2409	
	Barrel type electronics housing in AISI 316L ss, Profibus and FF versions (includes items 3, 7, 8, 9 and 12)		1
	- 1/2" NPT	AR2410	
	- M20	AR2411	
	- Pg 13.5	AR2412	
	- 1/2" GK	AR2413	
	Barrel type electronics housing in aluminium copper-free, Profibus and FF versions (includes items 3, 7, 8, 9 and 12)		1
	- 1/2" NPT	AR2416	
	- M20	AR2417	
	- Pg 13.5	AR2418	
	- 1/2" GK	AR2419	
3-7	Kit: locking screws for covers and tang	DR0165	1
4	Blind cover:		1-2
	- Aluminium	PN0282	
	- AISI 316 L ss	PN0111	
	- Aluminium copper-free	PN0511	
	- Aluminium Safety version	PN0566	
	- Aluminium copper-free Safety version	PN0567	
5	Windowed cover for LCD or analog output indicator:		1
	- Aluminium	AN0077	
	- AISI 316 L ss	AN0078	
	- Aluminium copper-free	AN0652	
	- Aluminium Safety version	AN1064	
	- Aluminium copper-free Safety version	AN1063	
6	Windowed cover for integral display:		1
	- Aluminium	AN0086	
	- AISI 316 L ss	AN0110	
	- Aluminium copper-free	AN0653	
8	Kit push button (zero and span)	DR0166	1
9	Kit: external earth connection assembly	DR0022	1
10	Output indicator:		1
	- analog 0-100% linear scale	EL0001	
	- ProMeter LCD digital (General purpose)	DR0206	
	- ProMeter LCD digital (EEx ia)	DR0207	
	- programmable signal meter and HART configurator CoMeter (general purpose)	DR0142	
	- programmable signal meter and HART configurator CoMeter (Intrinsic Safety EEx ia)	DR0145	

Item no.	Description	Part N°	Q.ty per Tx
10-1-5	Output indicator kit complete of windowed aluminium cover and "O" ring - analog 0-100% linear scale - ProMeter LCD digital (General purpose) - ProMeter LCD digital (Intrinsic Safety EEx ia) - programmable signal meter and HART configurator CoMeter (general purpose) - programmable signal meter and HART configurator CoMeter (Intrinsic Safety EEx ia)	DR0097 DR0209 DR0210 DR0143 DR0146	1
	Output indicator kit complete of windowed aluminium cover Safety version and "O" ring - analog 0-100% linear scale - ProMeter LCD digital (General purpose) - ProMeter LCD digital (Intrinsic Safety EEx ia) - programmable signal meter and HART configurator CoMeter (general purpose) - programmable signal meter and HART configurator CoMeter (Intrinsic Safety EEx ia)	DR0226 DR0228 DR0229 DR0231 DR0232	1
	Output indicator kit complete of windowed AISI cover and "O" ring - analog 0-100% linear scale - ProMeter LCD digital (General purpose) - ProMeter LCD digital (Intrinsic Safety EEx ia) - programmable signal meter and HART configurator CoMeter (general purpose) - programmable signal meter and HART configurator CoMeter (Intrinsic Safety EEx ia)	DR0124 DR0212 DR0213 DR0144 DR0147	1
	Output indicator kit complete of windowed aluminium copper-free cover and "O" ring - analog 0-100% linear scale - ProMeter LCD digital (General purpose) - ProMeter LCD digital (Intrinsic Safety EEx ia) - programmable signal meter and HART configurator CoMeter (general purpose) - programmable signal meter and HART configurator CoMeter (Intrinsic Safety EEx ia)	DR0200 DR0215 DR0216 DR0203 DR0204	1
	Output indicator kit complete of windowed aluminium copper-free cover Safety version and "O" ring - analog 0-100% linear scale - ProMeter LCD digital (General purpose) - ProMeter LCD digital (Intrinsic Safety EEx ia) - programmable signal meter and HART configurator CoMeter (general purpose) - programmable signal meter and HART configurator CoMeter (Intrinsic Safety EEx ia)	DR0234 DR0236 DR0237 DR0239 DR0240	1
11	Integral display (LCD digital $\mu$ P driven)	AN0669	1
11-1-6	Integral display kit with windowed aluminium cover and "O" ring	DR0218	1
	Integral display kit with windowed AISI cover and "O" ring	DR0219	1
	Integral display kit with windowed aluminium copper-free cover and "O" ring	DR0220	1
12	Terminal block assembly (Standard)	AR0326	1
	Terminal block assembly (Type N)	AR2404	1
	Terminal block assembly (Profibus and FF versions)	AR2405	1
12-13	Kit: terminal block complete of surge protector	AR0328	1
14	Secondary electronics module: - HART - Fieldbus - Profibus - HART Safety (SIL2)	AU0004 AU0008 AU0011 AN0846	1
15	Transducer assembly (see relevant Spare Parts Code List) (includes item 16)	- -	1
16	"O" ring	2000.9460	1
20	Bracket - Carbon steel - AISI 316L ss - AISI 316L ss for AISI housing	AB515.05260 AB515.05580 AP0360	1
21-22-23	Mounting kit for bracket - Carbon steel - AISI 316L ss	AR115.50270 DR0073	1
24	Screw for mounting bracket - Carbon steel - AISI 304 ss	DR0074 DR0075	1
20 to 24	Bracket kit - Carbon steel - AISI ss - AISI ss for AISI housing	DR0069 DR0070 DR0129	1

# Spare Parts Code List

# 2600T Series Electronic Transmitters Bottom works assembly for pressure Tx's Mod. B264HS gauge high overload Mod. B264NS absolute high overload

Code
------

### MEASUREMENT

Gauge pressure high overload	B264HS	
Absolute pressure high overload		B264NS

### SPAN LIMITS

1.6 and 160 kPa	16 and 1600 mbar	6.4 and 642 inH2O	H	
6 and 600 kPa	0.06 and 6 bar	0.87 and 87 psi	M	
24 and 2400 kPa	0.24 and 24 bar	3.5 and 348 psi	P	
80 and 8000 kPa	0.8 and 80 bar	11.6 and 1160 psi	Q	
160 and 16000 kPa	1.6 and 160 bar	23.2 and 2320 psi	S	
1400 and 42000 kPa	14 and 420 bar	203 and 6090 psi	T	T
2.67 and 160 kPa	26.7 and 1600 mbar	20 and 1200 mmHg		H
10 and 600 kPa	0.1 and 6 bar	1.45 and 87 psi		M
40 and 2400 kPa	0.4 and 24 bar	5.8 and 348 psi		P
134 and 8000 kPa	1.34 and 80 bar	19.4 and 1160 psi		Q
267 and 16000 kPa	2.67 and 160 bar	38.7 and 2320 psi		S

Diaphragm material	Fill fluid		
AISI 316 L ss	Silicone oil	S	S
Hastelloy C276 (AISI seat)	Silicone oil (Note 2)	H	H
Hastelloy C276	Silicone oil	K	K
Tantalum (not available for B264NS)	Silicone oil	T	
AISI 316 L ss	Inert fluid (Note 1)	A	A
Hastelloy C276 (AISI seat)	Inert fluid (Notes 1, 2)	B	B
Hastelloy C276	Inert fluid (Note 1)	F	F
Tantalum (not available for B264NS)	Inert fluid (Note 1)	D	
AISI 316 L ss	ABB fill	L	L
Hastelloy C276 (AISI seat)	ABB fill (Note 2)	Q	Q
Hastelloy C276	ABB fill	P	P

Process connection material	Connection		
AISI 316 L ss	1/2in NPT female (Note 3)	B	B
AISI 316 L ss	1/2in NPT male (Note 3)	T	T
AISI 316 L ss	DIN EN837-1 G 1/2in B (Note 3)	P	P
AISI 316 L ss	Adapter straight (180°) entry (Notes 2,3)	A	A
AISI 316 L ss	Adapter angle (90°) entry (Notes 2,3)	N	N
Hastelloy C276	1/2in NPT female (Note 4)	E	E
Hastelloy C276	1/2in NPT male (Note 4)	K	K
Hastelloy C276	DIN EN837-1 G 1/2in B (Note 4)	D	D
Hastelloy C276	Adapter straight (180°) entry (Notes 2,4)	F	F
Hastelloy C276	Adapter angle (90°) entry (Notes 2,4)	C	C

Note 1: Suitable for oxygen service

Note 2: Not available with sensor code T.

Note 3: Not available with Hastelloy C and Tantalum diaphragm code K, T, F, D, P.

Note 4: Not available with AISI 316L ss and Hastelloy C on AISI seat diaphragm code S, H, A, B, L, Q.

Hastelloy is a Cabot Corporation trademark

# Spare Parts Code List

# 2600T Series Electronic Transmitters Bottom works assembly for pressure Tx's Mod. B264GS gauge standard overload Mod. B264AS absolute standard overload

			Code	
<b>MEASUREMENT</b>				
Gauge pressure standard overload			B264GS	
Absolute pressure standard overload				B264AS
<b>SPAN LIMITS</b>				
0.2 and 6 kPa	2 and 60 mbar	0.8 and 24 inH2O	C	
0.4 and 40 kPa	4 and 400 mbar	1.6 and 160 inH2O	F	
2.5 and 250 kPa	25 and 2500 mbar	10 and 1000 inH2O	L	
30 and 3000 kPa	0.3 and 30 bar	4.35 and 435 psi	U	
100 and 10000 kPa	1 and 100 bar	14.5 and 1450 psi	R	
600 and 60000 kPa	6 and 600 bar	87 and 8700 psi	V	
0.3 and 6 kPa	3 and 60 mbar	2.25 and 45 mmHg		C
2 and 40 kPa	20 and 400 mbar	15 and 300 mmHg		F
12.5 and 250 kPa	125 and 2500 mbar	93.8 and 1875 mmHg		L
150 and 3000 kPa	1.5 and 30 bar	21.7 and 435 mmHg		U
<b>Diaphragm material</b>				
<b>Fill fluid</b>				
Hastelloy C276	Silicone oil (Note 2)		K	K
Hastelloy C276 gold-plated	Silicone oil (Note 2)		G	G
Hastelloy C276	Inert fluid (Notes 1, 2)		F	F
Hastelloy C276 gold-plated	Inert fluid (Notes 1, 2)		E	E
Hastelloy C276	White oil (FDA) - (Note 2)		Z	Z
Hastelloy C276 gold-plated	White oil (FDA) - (Note 2)		1	1
Ceramic	No filling (Note 3)		J	J
<b>Process connection material (wetted parts)</b>				
<b>Connection</b>				
AISI 316 L ss	1/2in NPT female		B	B
AISI 316 L ss	1/2in NPT male		T	T
AISI 316 L ss	DIN EN837-1 G 1/2in B		P	P
Hastelloy C276	1/2in NPT female		E	E
Hastelloy C276	1/2in NPT male		K	K
Hastelloy C276	DIN EN837-1 G 1/2in B		D	D
<b>Gaskets</b>				
Viton (Notes 1, 3)			5	5
Perfluoroelastomer (MWP=0.6 MPa) - (Note 3)			6	6
Perbunan (Note 3)			8	8
None (Note 2)			N	N

Note 1: Suitable for oxygen service  
 Note 2: Not available with sensor code C, F.  
 Note 3: Not available with sensor code L, U, R, V.

Hastelloy is a Cabot Corporation trademark

Spare Parts  
Code List

**2600T Series Electronic Transmitters**  
**Bottom works assembly for**  
**Safety pressure transmitters**  
**Mod. B268HS gauge high overload**  
**Mod. B268NS absolute high overload**

**Code**

**MEASUREMENT**

Safety gauge pressure high overload
Safety absolute pressure high overload

<b>B268HS</b>	
	<b>B268NS</b>

**SPAN LIMITS**

1.6 and 160 kPa	16 and 1600 mbar	6.4 and 642 inH2O
6 and 600 kPa	0.06 and 6 bar	0.87 and 87 psi
24 and 2400 kPa	0.24 and 24 bar	3.5 and 348 psi
80 and 8000 kPa	0.8 and 80 bar	11.6 and 1160 psi
160 and 16000 kPa	1.6 and 160 bar	23.2 and 2320 psi
2.67 and 160 kPa	26.7 and 1600 mbar	20 and 1200 mmHg
10 and 600 kPa	0.1 and 6 bar	1.45 and 87 psi
40 and 2400 kPa	0.4 and 24 bar	5.8 and 348 psi
134 and 8000 kPa	1.34 and 80 bar	19.4 and 1160 psi
267 and 16000 kPa	2.67 and 160 bar	38.7 and 2320 psi

<b>H</b>	
<b>M</b>	
<b>P</b>	
<b>Q</b>	
<b>S</b>	
	<b>H</b>
	<b>M</b>
	<b>P</b>
	<b>Q</b>
	<b>S</b>

**Diaphragm material**

**Fill fluid**

AISI 316 L ss	Silicone oil
Hastelloy C276 (AISI seat)	Silicone oil
Hastelloy C276	Silicone oil
Tantalum (not available for B268NS)	Silicone oil
AISI 316 L ss	Inert fluid (Note 1)
Hastelloy C276 (AISI seat)	Inert fluid (Note 1)
Hastelloy C276	Inert fluid (Note 1)
Tantalum (not available for B268NS)	Inert fluid (Note 1)
AISI 316 L ss	ABB fill
Hastelloy C276 (AISI seat)	ABB fill
Hastelloy C276	ABB fill

<b>S</b>	<b>S</b>
<b>H</b>	<b>H</b>
<b>K</b>	<b>K</b>
<b>T</b>	
<b>A</b>	<b>A</b>
<b>B</b>	<b>B</b>
<b>F</b>	<b>F</b>
<b>D</b>	
<b>L</b>	<b>L</b>
<b>Q</b>	<b>Q</b>
<b>P</b>	<b>P</b>

**Process connection material**

**Connection**

AISI 316 L ss	1/2in NPT female (Note 2)
AISI 316 L ss	1/2in NPT male (Note 2)
AISI 316 L ss	DIN EN837-1 G 1/2in B (Note 2)
AISI 316 L ss	Adapter straight (180°) entry (Note 2)
AISI 316 L ss	Adapter angle (90°) entry (Note 2)
Hastelloy C276	1/2in NPT female (Note 3)
Hastelloy C276	1/2in NPT male (Note 3)
Hastelloy C276	DIN EN837-1 G 1/2in B (Note 3)
Hastelloy C276	Adapter straight (180°) entry (Note 3)
Hastelloy C276	Adapter angle (90°) entry (Note 3)

<b>B</b>	<b>B</b>
<b>T</b>	<b>T</b>
<b>P</b>	<b>P</b>
<b>A</b>	<b>A</b>
<b>N</b>	<b>N</b>
<b>E</b>	<b>E</b>
<b>K</b>	<b>K</b>
<b>D</b>	<b>D</b>
<b>F</b>	<b>F</b>
<b>C</b>	<b>C</b>

Note 1: Suitable for oxygen service

Note 2: Not available with Hastelloy C and Tantalum diaphragm code K, T, F, D, P.

Note 3: Not available with AISI 316L ss and Hastelloy C on AISI seat diaphragm code S, H, A, B, L, Q.

Hastelloy is a Cabot Corporation trademark

# Spare Parts Code List

# 2600T Series Electronic Transmitters Bottom works assembly for pressure transmitters (fast) Mod. B264HF gauge high overload Mod. B264NF absolute high overload

			Code	
<b>MEASUREMENT</b>				
Gauge pressure high overload (fast)			B264HF	
Absolute pressure high overload (fast)				B264NF
<b>SPAN LIMITS</b>				
1.6 and 160 kPa	16 and 1600 mbar	6.4 and 642 inH2O	H	
2.67 and 160 kPa	26.7 and 1600 mbar	20 and 1200 mmHg		H
<b>Diaphragm material</b>				
AISI 316 L ss	Silicone oil		S	S
Hastelloy C276 (AISI seat)	Silicone oil		H	H
Hastelloy C276	Silicone oil		K	K
Tantalum (not available for B264NF)	Silicone oil		T	
AISI 316 L ss	Inert fluid (Note 1)		A	A
Hastelloy C276 (AISI seat)	Inert fluid (Note 1)		B	B
Hastelloy C276	Inert fluid (Note 1)		F	F
Tantalum (not available for B264NF)	Inert fluid (Note 1)		D	
AISI 316 L ss	ABB fill		L	L
Hastelloy C276 (AISI seat)	ABB fill		Q	Q
Hastelloy C276	ABB fill		P	P
<b>Process connection material</b>				
AISI 316 L ss	1/2in NPT female (Note 2)		B	B
AISI 316 L ss	1/2in NPT male (Note 2)		T	T
AISI 316 L ss	DIN EN837-1 G 1/2in B (Note 2)		P	P
AISI 316 L ss	Adapter straight (180°) entry (Note 2)		A	A
AISI 316 L ss	Adapter angle (90°) entry (Note 2)		N	N
Hastelloy C276	1/2in NPT female (Note 3)		E	E
Hastelloy C276	1/2in NPT male (Note 3)		K	K
Hastelloy C276	DIN EN837-1 G 1/2in B (Note 3)		D	D
Hastelloy C276	Adapter straight (180°) entry (Note 3)		F	F
Hastelloy C276	Adapter angle (90°) entry (Note 3)		C	C

Note 1: Suitable for oxygen service

Note 2: Not available with Hastelloy C and Tantalum diaphragm code K, T, F, D, P.

Note 3: Not available with AISI 316L ss and Hastelloy C on AISI seat diaphragm code S, H, A, B, L, Q.

Hastelloy is a Cabot Corporation trademark



The Company's policy is one of continuous product improvement and the right is reserved to modify the specifications contained herein without notice.

---

ABB Ltd  
Howard Road, St. Neots  
Cambridgeshire, PE19 3EU  
UK  
Tel: +44(0)1480 475321  
Fax: +44(0)1480 217948

ABB Inc.  
125 E. County Line Road  
Warminster, PA 18974  
USA  
Tel: +1 215 674 6000  
Fax: +1 215 674 7183

ABB SACE spa  
Business Unit Instrumentation  
Via Statale 113  
22016 Lenno (CO) Italy  
Tel: +39 0344 58111  
Fax: +39 0344 56278

ABB Automation Products GmbH  
Schillerstrasse 72  
D-32425 Minden  
Germany  
Tel: +49 (0) 571 830 1691  
Fax: +49 (0) 571 830 1368