

**ABB** Kent-Taylor

## MagMaster MFE Series Flowmeters Electromagnetic Sensors

### Features Include

- ◆ **Unrivalled flow performance-  
±0.2% accuracy.**
- ◆ **Pulsed DC Technology Incorporates  
Benefits of AC Systems**
- ◆ **Operable flow range of 1000:1.**
- ◆ **For all process liquids, slurries,  
pulp and pastes.**
- ◆ **Two-year warranty.**
- ◆ **Submersible and buriable sensors.**
- ◆ **FM approved and CSA certified for  
hazardous locations.**
- ◆ **Variety of corrosion and abrasion  
resistant construction materials.**
- ◆ **Bi-directional flow metering system.**
- ◆ **Designed, manufactured and cali-  
brated to internationally accepted  
standards.**
  - ISO 9001/NAMAS/NIST/NATA
  - insures reliable, maintenance-free  
operation

**MagMaster MFE** flowmeters feature an innovative multi-frequency sensor drive technology that combines the benefits of AC and DC systems to help eliminate the effects of process noise. The bi-directional series flanged sensors (1/2 to 24 in.) are offered with a variety of wetted materials. Options are available for ANSI Class 150 or 300 flanges. The sensor is submersible and buriable. MFE sensors are used with integral ( $\leq 16$  in.) or remote MagMaster MFE

transmitters, and offer a system accuracy of 0.2%. MagMaster has two modes of operation: Process mode, for a variety of process and industrial applications, and Slurry mode, for heavy slurries and pulps in mining, cement, fly ash, and concentrated pulp and paper applications. MagMaster monitors flow velocity, low-flow, and no-flow conditions (empty pipe zero), and has self-verification (verifies meter operation without interrupting flow or power)



**MagMaster - bringing  
unsurpassed flowmetering  
performance**



## INTRODUCTION

MAGMASTER flowmeters provide new levels of flow measurement and performance with an exclusive sensor design featuring ultra-linear magnetics and a patented signal processing system. The MagMaster utilizes pulsed dc technology coupled with the benefits of ac design.

Two modes— Process MAGMASTER and Slurry MAGMASTER are available in a wide range of sizes and options including electrode materials, liner materials and transmitter capabilities.

## SPECIFICATIONS

### Configuration:

Transmitter may be integral with sensor for sizes 1/2 to 16-inches (400mm) or remote from sensor for all sizes.

### Separation (remote transmitters):

The maximum cable length in feet is the lower of 330 feet (100m) or 15 x the conductivity ( $\mu\text{S}/\text{cm}$ ). Longer lengths are special order.

### Accuracy (under forward flow reference conditions) with MagMaster transmitter

#### Flanged sensors:

#### Display, Serial comms, Frequency output:

$\pm 0.2\%$  of reading or  $\pm 0.003 \text{ ft/sec}$  ( $0.001 \text{ m/s}$ ) (whichever is greater) up to a maximum velocity of  $>49 \text{ ft/sec}$  ( $15 \text{ m/s}$ ). See Figure below.

#### Analog output:

As Frequency output plus  $\pm 0.008 \text{ mA}$ .

#### Pressure effect:

Less than 0.15% over the operating range of the instrument.

#### Temperature effect:

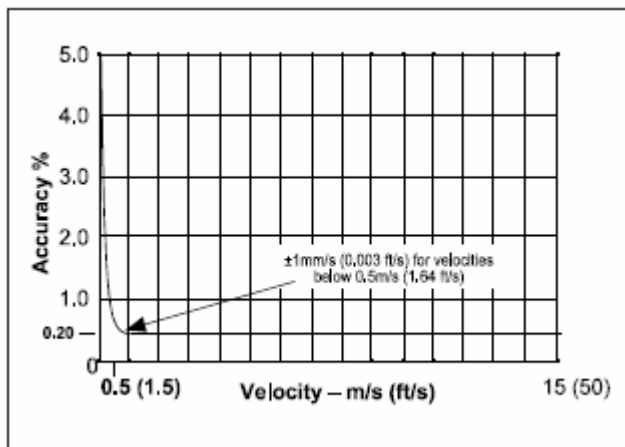
Sensor:  $< \pm 0.03\%$  of rate per  $10^\circ\text{C}$ .

#### Repeatability & Reproducibility:

$\pm 0.05\%$  or  $\pm 0.0008 \text{ ft/s}$  ( $\pm 0.25 \text{ mm/s}$ ), whichever is greater.

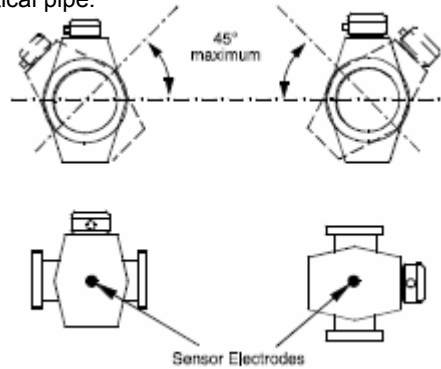
#### Conductivity:

Liquids and slurries having a conductivity of not less than  $5 \mu\text{S}/\text{cm}$  ( $5 \mu\text{mho}/\text{cm}$ ).



### Mounting:

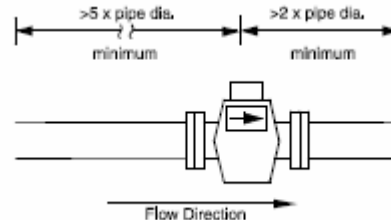
Directly into pipeline at any attitude. Electrodes can not be in vertical plane. Flow must be up if installed in a vertical pipe.



### Recommended Mating Pipe Conditions:

Upstream: 5 to 10 diameters straight pipe depending on performance requirements and upstream disturbance.

Downstream: 2 to 3 diameters straight pipe depending on performance requirements and downstream disturbances.



### Power consumption:

Less than 20VA with transmitter.

### Hazardous Area Certification:

FM approved and CSA certified for Class I, Div. 2, Groups A, B, C, D hazardous locations, 0.5-24 inches (15-600 mm).

NOTE: FM approved sensors for hazardous locations include an intrinsic safety shunt circuit for the electrodes allowing for a Div. 1 rating inside the pipe. The circuit is located in the larger than standard terminal box housing. CSA certified sensors for hazardous locations may or may not include the circuit, depending on the rating inside the pipe.

### Calibration:

3 point, 8 point, witnessed, NAMAS (8- to 24-inch only), slurry calibration options.

### Sensor cable connection:

0.5 inch NPT--single opening. A single cable is available that provides for the coil drive and electrode signals. See Options.

1204 Main Street • Sebastian, Florida 32958  
Phone: 772-581-0477 • Fax: 772-581-0481

[www.wisnercontrols.com](http://www.wisnercontrols.com)

**SPECIFICATION – SENSORS**

MAGMASTER sensors are available in flanged styles and come in a wide choice of lining and electrode materials to satisfy all applications. (Refer to **Table B** for option details.)

**Sizes (Nominal Bore):**

1/2-inch to 24-inches (15mm to 600mm). Refer to MAG.PLUS specifications for larger sizes. Refer to Micro-MAG specifications for sizes smaller than 1/2-inch.

**Metering Tube:**

Lined stainless steel. (304 SST)

**Lining:**

PFA-Perfluoroalkoxy fluorocarbon – UKWFBS\* (chemically resistant to almost all liquids), Elastomer - chlorobutylrubber and EPDM – UKWFBS\*, Polypropylene – UKWFBS\*, Ebonite (hard rubber), Bonded FEP (Viton seals), Polyurethane and Neoprene. Polyurethane meeting FDA approval also available for potable water \* United Kingdom Water Fittings Bylaws Scheme (UKWFBS) listed for potable water.

**Electrodes:**

Non-removable, 316 S.S, Hastelloy C, Titanium, Tantalum and Platinum/Iridium. Treated titanium for pulp and paper applications where concentrations of stock are greater than 5% or liquid contains long fibers regardless of the concentration. Tungsten carbide coated electrodes for high abrasion mining, cement or flyash applications.

**Grounding Electrode:**

Fitted as standard in flanged meters, 1/2 in. to 6 in. (15 to 150 mm), in the same material as measuring electrodes.

**Grounding Ring:**

For liner protection. < 12 in (300 mm) = 316 SST, >12 = 304 SST

**Note: Pressure Limitations**

Flanged meters:  
 Sizes 0.5-inch to 24-inch (15mm to 600mm):  
 maximum pressure dictated by flange rating.

**Process Connections:**

**Flanged meter**-Carbon steel flanges to mate with BS4504, DIN, UNI, AFNOR, ANSI, AS2129 and BS10 flanges.

**Temperature:**

**Sensors** (with integral transmitters):

Ambient: -10 to +60°C (14 to 140°F)  
 Process Fluid:  
 Polyurethane lining: -10 to +70°C (14 to 158°F)  
 All other linings: -10 to +80°C (14 to 176°F)

Ambient and process fluid is limited to -10° to 60°C for the integral CSA-certified hazardous area meter

**Sensors** (remote transmitter): see **Table A.**

**Environmental Protection:**

Sensors with integral transmitters:

NEMA 4X/IP65

Flanged sensors, with remote transmitters\*:

NEMA 6P/IP68 with potted terminal box and cable  
 - up to 33 ft (10 M) depth.

Buriable:

3 ft. (1m) to 16 ft. (5m) depth (to top of sensor).

**Sensor Housing:**

Flanged meters:

1/2 to 6-inch (150mm) Cast aluminum alloy, Epoxy coated.

Non-approved/certified meters:

8- to 12-inch (200 to 300mm) ABS plastic  
 14- to 24-inch (350 to 600mm) GRP (Glass Reinforced Plastic)

Approved/certified & High temperature meters:

8- to 24-inch (200 to 600mm) Fabricated steel.

**Table A Temperature Limits for Sensors (Remote Transmitter) at -30 to 140°F (-35 to 60°C) Ambient**

Sensor Construction	Liner Material vs Process Fluid Temperature Maximum (°C/°F)				
	Poly-propylene	FEP/PFA "Teflon" & Elastomer	Ebonite	Poly-urethane	Neoprene
ABB Standard, Non-hazardous, 1/2" to 6", metal cased 8" to 24"	26.6/80	120/248	95/203	70/158	110/230
FM approved, CSA certified, Non-Hazardous, high temp., 1/2" to 24"	26.6/80	120/248	95/203	70/158	110/230
FM approved, CSA certified, Hazardous, high temp., 1/2" to 24"	26.6/80	120/248*	95/203	70/158	110/230*
ABB Standard, Non-hazardous, > 24", plastic case 8" to 24"	N/A	80/176	80/176	70/158	80/176
FM approved, CSA certified, Non-Hazardous, 1/2" to 24"	26.6/80	80/176	80/176	70/158	80/176
FM approved, CSA certified, Hazardous, standard temp., 1/2" to 24"	26.6/80	60/140	60/140	60/140	60/140

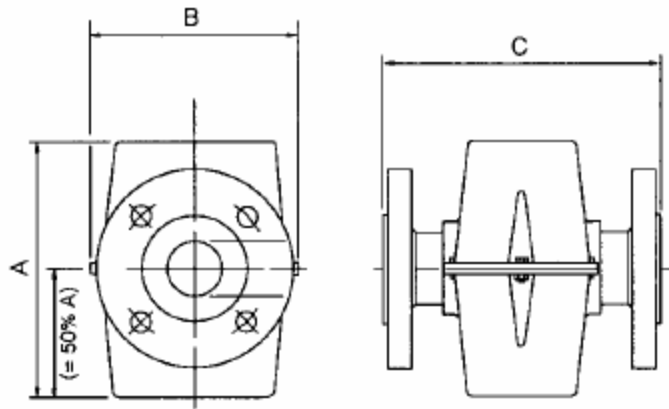
\* Note: 8- to 24-inch (200 –600mm) sizes limited to 100°C (212°F)



**DIMENSIONS**

**1/2- to 6-inch (15 to 150mm) flanged sensors without transmitter or terminal box**

Meter Size		A		B		C		Net Weight	
mm	inch	mm	inch	mm	inch	mm	inch	kg	lbs
15	0.5	174	6.9	140	5.5	200	7.9	9	20
20	0.75	174	6.9	140	5.5	200	7.9	9	20
25	1.0	210	8.3	176	6.9	200	7.9	10	22
40	1.5	210	8.3	176	6.9	200	7.9	12	27
50	2.0	210	8.3	176	6.9	200	7.9	14	31
65	2.5	280	11.0	219	8.6	200	7.9	19	42
80	3.0	280	11.0	219	8.6	200	7.9	20	44
100	4.0	312	12.3	230.5	9.1	250	9.9	28	62
150	5.9	370	14.6	281	11.1	300	11.8	39	86

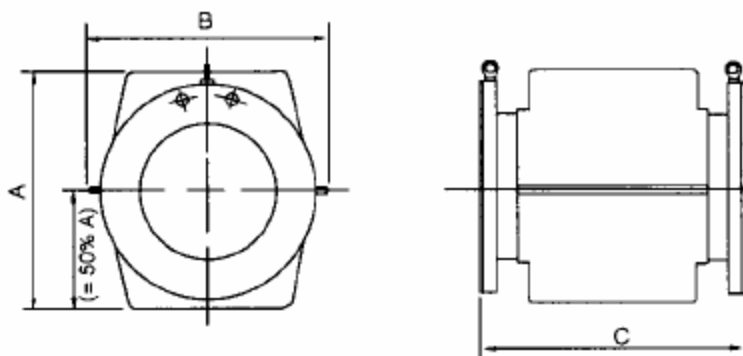


Polyurethane and PFA are part face linings

**DIMENSIONS**

**8- to 24-inch (200 to 600mm) flanged sensors without transmitter or terminal box**

Meter Size		A		B		C (w/liners)		Net Weight	
mm	inch	mm	inch	mm	inch	mm	inch	kg	lbs
200	8	400	15.7	396	15.6	418	16.5	52	115
250	10	446	17.6	455	17.9	488	19.2	80	176
300	12	508	20.0	510	20.1	538	21.2	108	238
350	14	560	22.0	562	22.1	568	22.4	120	264
400	16	614	24.2	596	23.5	618	24.3	186	410
450	18	656	25.8	640	25.2	698	27.5	210	462
500	20	710	28.0	700	27.6	768	30.2	266	586
600	24	810	31.9	810	31.9	918	36.1	378	832



Polyurethane and FEP are part face linings

1204 Main Street • Sebastian, Florida 32958  
 Phone: 772-581-0477 • Fax: 772-581-0481

[www.wisnercontrols.com](http://www.wisnercontrols.com)



**Table B Flowmeter Sizing**

Size		USGPMs				
mm	Inches	Operable Minimum Flow	Flow Rate Deviation See Note 1	Minimum Flow at Rated Accuracy	Maximum Flow @ 10 m/s (33 ft./sec)	Std. Calibrated Range See Note 2
15	0.5	0.03	0.003	1.4	28	10
20	0.75	0.05	0.005	2.5	49	15
25	1	0.08	0.008	3.9	77	25
40	1.5	0.20	0.020	10.0	199	60
50	2	0.31	0.031	15.6	311	100
65	2.5	0.53	0.053	26.3	525	150
80	3	0.80	0.080	39.8	796	225
100	4	1.24	0.12	62.2	1244	400
150	6	2.80	0.28	140	2800	900
200	8	4.98	0.50	249	4980	1500
250	10	7.78	0.78	389	7780	2000
300	12	11.2	1.12	560	11,202	3000
350	14	15.2	1.5	762	15,248	4000
400	16	19.9	2.0	996	19,916	5000
450	18	25.2	2.5	1260	25,209	6000
500	20	31.1	3.1	1556	31,122	7500
600	24	44.8	4.5	2240	44,812	10,000

Note 1: Flow rate deviation listed is plus and minus inaccuracy in terms of USGPM for all flows below the **Minimum Flow at Rated Accuracy** column. These values apply to the pulse frequency/displayed output of flanged meters.

Note 2: The transmitter is set to this range for the 4-20 mA output unless otherwise specified.



# Model Number Designation

MF/E 04 05 06 07 08 09 10 11 12 13 14 15 16 17 18

## Bore Size

0.5 in	(15mm)	.....	E150
0.75 in	(20mm)	.....	E200
1.0 in	(25mm)	.....	E250
1.5 in	(40mm)	.....	E400
2.0 in	(50mm)	.....	E500
2.5 in	(65mm)	.....	E650
3.0 in	(80mm)	.....	E800
4.0 in	(100mm)	.....	E101
6.0 in	(150mm)	.....	E151
8.0 in	(200mm)	.....	E201
10.0 in	(250mm)	.....	E251
12.0 in	(300mm)	.....	E301
14.0 in	(350mm)	.....	E351
16.0 in	(400mm)	.....	E401
18.0 in	(450mm)	.....	E451
20.0 in	(500mm)	.....	E501
24.0 in	(600mm)	.....	E601

## Flange Style End Connections

Standard, Flanged ANSI Class 150 compatible, Fully rated	.....	3
Flanged ANSI Class 300 compatible, Fully rated, 8 to 24 inch.	.....	K

## Lining Materials

Teflon bonded FEP, 8 through 24 inches (200mm-600mm)		
8 inch thru 24 inch	.....	3
Elastomer, 2 through 24 inches (50mm -600mm)	.....	4
Polyurethane, 1 through 24 inches (25mm -600mm)	.....	6
Teflon (PFA), 0.5 through 6 inches (15mm -150mm)	.....	7
Neoprene, 8 through 24 inches (200mm -600)	.....	8

## Electrodes

316 Stainless Steel	.....	1
Hastelloy C	.....	2
Titanium	.....	3
Tantalum .5 through 6 inches (15mm-150mm)	.....	4
Tantalum, ≥8 inches (≥200mm)	.....	4
Platinum/Iridium .5 through 6 inches (15mm-150mm)	.....	5
Platinum/Iridium ≥8 inches (≥200mm)	.....	5
Tungsten Carbide Coated 316SST		
(For Mining, Cement, Flash applications)	.....	6
Treated Titanium Slurry Electrode		
(only with slurry calibration & slurry mode transmitter)	.....	8
316 Stainless Steel, Slurry Calibration	.....	A
Hastelloy 'C', Slurry Calibration	.....	B



MF/E

04 05 06 07 08 09 10 11 12 13 14 15 16 17 18

**Sensor Construction**

ABB standard. Non-hazardous location. 1 in. through 6 in.(15mm-150mm) .....	1
ABB standard. Non-hazardous location. Metal case for 8 through 24 inches (200mm-600mm) .....	4
High temperature process fluid temperature above 140°F (60°C) FM approved, CSA certified non-incendive for Class I, Div 2, Groups A, B, C, D hazardous locations, intrinsically safe electrodes, remote sensor only	
Process fluid temperature 140°F (60°C) maximum. 0.5 through 24inches (15mm-600mm) .....	6
FM approved, CSA certified non-incendive for Class I, Div 2, Groups A, B, C, D hazardous locations, intrinsically safe electrodes, remote sensor only.	
High temperature process fluid temperature above 140°F (60°C) 0.5 through 24 inches (15mm-600mm) .....	7
FM approved, CSA certified for non-hazardous locations.	
Standard temperature range 0.5 through 24inches (15mm-600mm) .....	8
FM approved, CSA certified for non-hazardous locations.	
High temperature process fluid temperature above 140°F (60°C). Remote only. 0.5 through 24 inches (15mm-600mm) .....	D
CSA certified non-incendive for Class I, Div 2, Groups A, B, C, D hazardous locations. Non- incendive electrodes.	
Process fluid temperature 140°F (60°C) maximum. 0.5 through 24 inches (15mm-600mm) .....	A
CSA certified non-incendive for Class I, Div 2, Groups A, B, C, D hazardous locations. Non- incendive electrodes.	
High temperature process fluid temperature above 140°F (60°C). Remote only. 0.5 through 24 inches (15mm-600mm) .....	B

**Accessories**

None .....	0
Grounding ring (one piece) (0.5" through 24") .....	1
Grounding ring (two piece) (0.5" through 24") .....	8

**Calibration**

Standard 3-point calibration .....	1
8-point calibration - 0.5 through 6 inches (15mm-150mm), ≥8 inches (200mm) .....	2
Custom calibration .....	9
CalMaster Fingerprint w/3-point calibration .....	J

Unused ..... 00

**Glanding**

Conduit entry: 0.5" NPT - order cable and length per OPTIONS .....	4
Conduit entry: 0.5" NPT - cable fitted and potted - order cable and length per OPTIONS .....	8

**Transmitter Type**

Sensor built for integral mounted MagMaster transmitter (≤ 16" only) .....	EH
Sensor built for Remote MagMaster transmitter .....	ER

Instruction Manual ..... IMMAG/MAS

**OPTIONS (specify as separate item on order)**

Cable, sensor/transmitter (list number of feet)	
Standard. <u>Can be used</u> with FM/CSA approved instruments. ....	STT3350
Submersible-Waterproof. <u>Cannot be used</u> with FM/CSA approved instruments. ....	STT3500
Armored. <u>Cannot be used</u> with FM/CSA approved instruments. ....	STT3501

**Notes:**

1. FM approved, CSA certified sensors or transmitter must be part of an approved/certified MAGMASTER system.
2. Use a "9" in the catalog number to signify special feature in the character position (to be used with an Special Product Request SPR number).
3. Consult factory for other materials of construction.

CF = Consult Factory

1204 Main Street • Sebastian, Florida 32958  
Phone: 772-581-0477 • Fax: 772-581-0481

[www.wisnercontrols.com](http://www.wisnercontrols.com)

